

INTEROFFICE MEMORANDUM

DATE: January 26, 1971

TO: Bridge Design Personnel
FROM: Veral Pinkerton, Bridge Engineer
SUBJECT: Type Shoes

There has been some confusion regarding the type of shoes used at the different locations on a bridge.

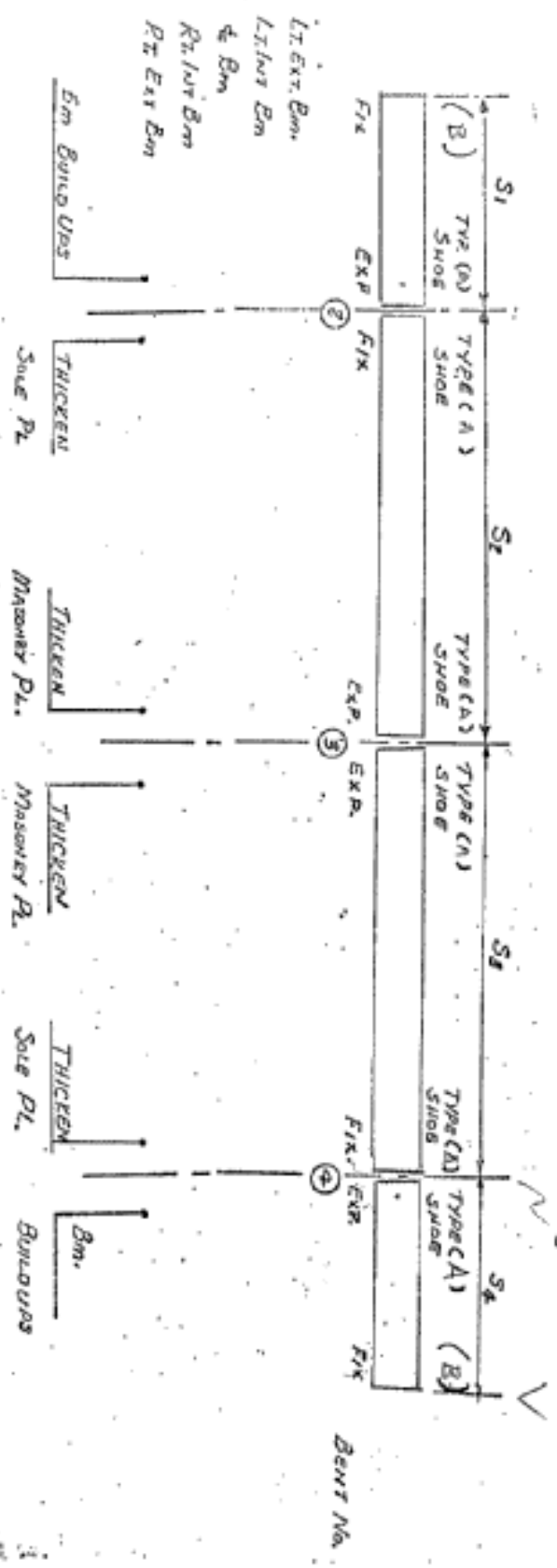
Some version of the attached should be used or the information supplied in some other acceptable manner.

VP:bc

Enc.

11-321
 (2004) 3/15/2

The sketch shown below should appear on layout or Interior Bent drawings. It should indicate the value of build-up for modified spans; plate thickening to different "e" values in beams of same nominal depth such as 36WFL35 and 36WFL50 which are in adjacent spans; or plate thickening due to grade or vertical curve. Type of shoe for each span should be indicated as shown and if shoes differ on exterior beam this should be so noted.



SKETCH SHOWING BEAM BUILDOUPS & PLATE THICKENING
 (TYPICAL)

6-28-63